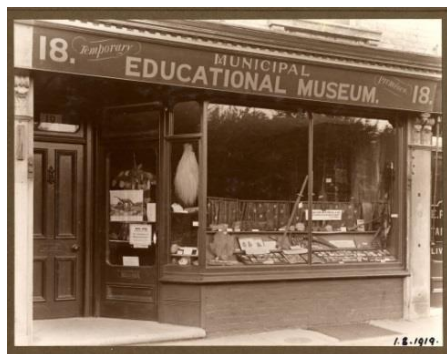


Tunbridge Wells Cultural & Learning Hub

Stakeholder update – 7th February 2017



Latest news:

The Design Team have been busy creating concept designs for the Tunbridge Wells Cultural & Learning Hub. Consultation on these will begin soon!

Dates for the diary:

- Wednesday 22 February – Public consultation ‘Interpreting Collections with Metaphor’
- Wednesday 1 March – Public Consultation on concept design with the Architects, Purcell.

More details will be being released via the website.

Service Spotlight:

KCC Libraries, Registration and Archives (LRA) cover a wide range of services that most people, at some point in their lives, come into contact with. From the registration of their birth to the library books they borrow, and the delivery of their wedding ceremony - our services touch almost everyone.

Registration is a service steeped in history and dates back to 1837 when civil registration was first introduced. Since then the registration of births, deaths and marriages has been formally recorded and we now register around 15,000 births, 16,000 deaths and 6000 marriages each year. And with more than 200 licensed wedding venues to choose from in Kent and Bexley, it's not hard to see why we're so popular!

With 99 buildings and 5 mobiles across the county, we also deliver one of the largest library services in the UK. But we're not just about books – many people are surprised to learn that we also offer free WiFi in all our buildings, free computers, free click and collect reservations, DVDs, CDs, events and activities for all ages, e-books and e-magazines, business advice, and much more.

Finding out about your past and preserving the rich history of the county is also a key part of what we do through our Archives service. We hold around 14 kilometres of historical documents at our state-of-the-art Kent History and Library Centre, based in Maidstone; including letters, maps, postcards, pictures, and much more. Anyone is welcome to use our search room to research their family tree or historical project, and speak to one of our members of staff for help and advice.

Find out more about us at www.kent.gov.uk



Thank you for your continued support. If you have any questions about the project or this newsletter please contact:

museum@tunbridgewells.gov.uk

www.tunbridgewellsmuseum.org/cultural-hub



Supported using public funding by
**ARTS COUNCIL
ENGLAND**